

MKS Series Cabinet

MKS Series cabinet indoor (16:9 ratio, front maintenance, System & PSU Backup) made of high-strength U-shaped aluminum alloy structure design which greatly increases the heat dissipation area and improves the overall display effect. Floating connector between modules and IC boards, which achieves more stable excellent flatness of the screen. Full front maintenance magnetic design to suitable for more application scenarios. Widely used in controlling center, conference room, TV station, etc.



16:9 Standard Format
U-shaped aluminum alloy

Structural Features
All-round wireless connection

Easy Maintenance
Full-front maintenance

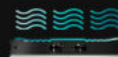
Superb Visual Performance
14bit+, ≥3840Hz

U-Shaped iCool Heat Dissipation

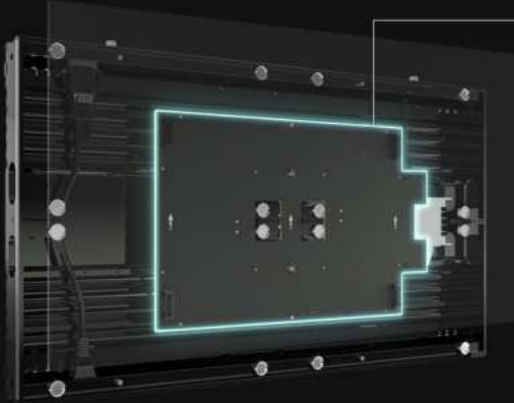
Be made of high-strength U-shaped aluminum alloy structure design which greatly increases the heat dissipation area

U-Shaped Cooling Structure

Expand the contact area with the air for excellent heat dissipation



All-round Wireless Connection



Integrated design for internal connections with HUB board



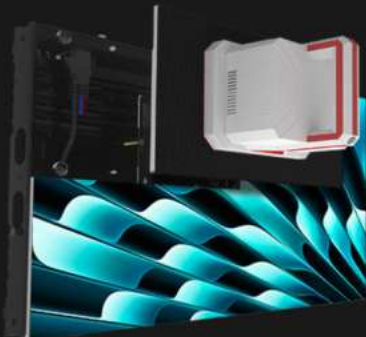
All-Round Wireless Connection

All-round wireless connections between its internal components and integrated HUB board

Easy Maintenance & Installation

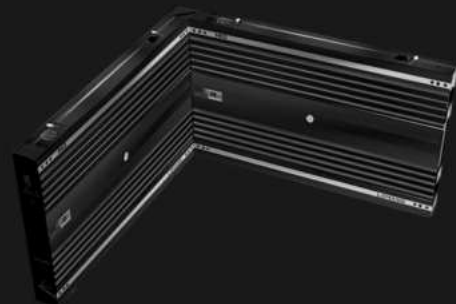
Full front maintenance magnetic design: floating connector between modules and IC boards, Customizable Right-angle Splicing

Full Front Maintenance Magnetic Design



* Floating connector between modules and IC boards

Customizable Splicing Right-angle Design



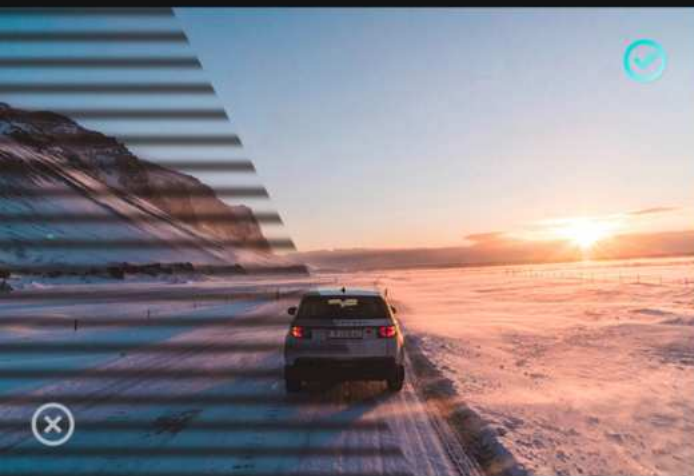
* Support product customization services and meet more of your needs

14bit+ Grayscale Performance

Accurate color management system, after the video is decoded by the LED control system, a secondary filtering display algorithm is added to perform pixel-by-pixel 14-bit color correction on each light-emitting diode of the display.



COLOR CORRECTION
14Bit



Higher Refresh $\geq 3840\text{Hz}$

The imaging of LED self-illumination does not require reaction time, and there is no delay in the performance of dynamic images, which is in line with the human eye's perception of moving images.

Scenario Case



Case Name: OHSU Knight Cancer



Case Name: Anhui Controlling Center Renovation Project



Case Name: Jiujiang Shipping Administration Controlling Center

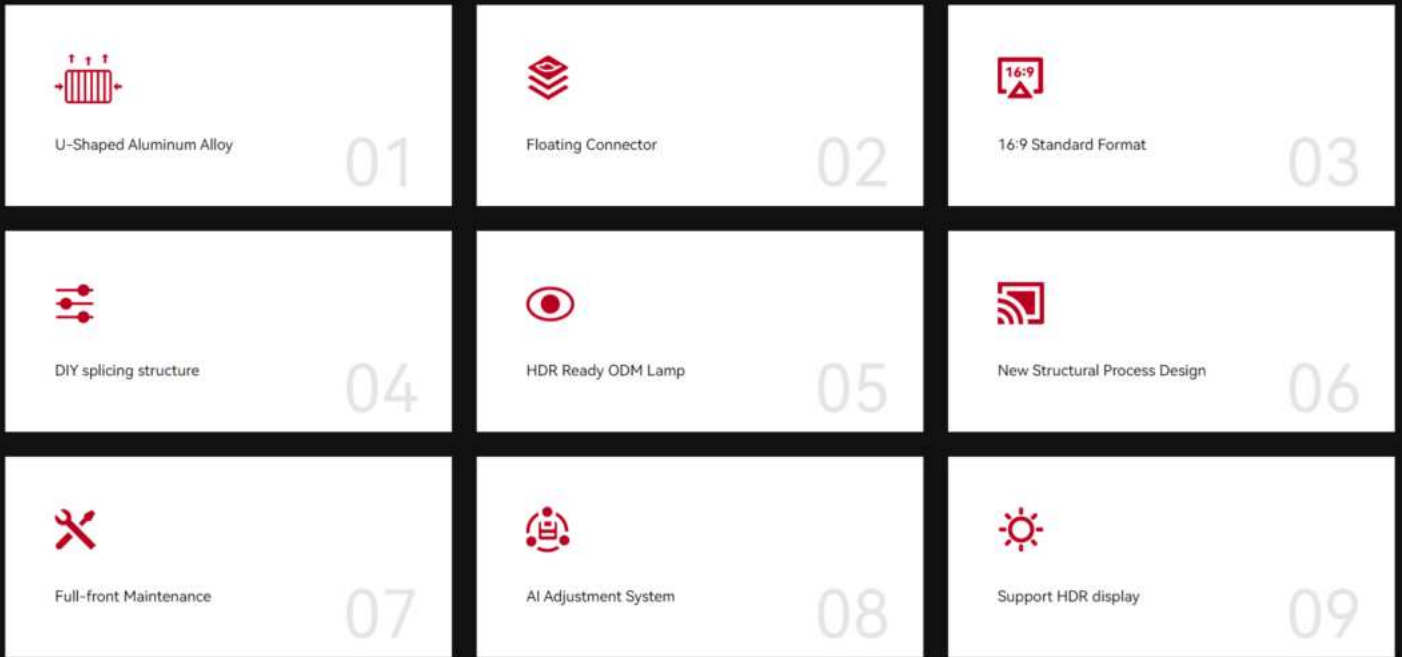


Case Name: LED video wall of KRX Cooperations Showroom in Korea



Case Name: Tianlong Mountain Stone Cellar Digital Museum

Features



Specifications

Parameter Item	MKS P0.9	MKS P1.2	MKS P1.5	MKS P1.8	MKS P2.5
Pixel Pitch (mm)	0.9375	1.25	1.5625	1.875	2.5/2.48
Pixel Density (pixels/sqm)	1,137,777	640,000	409,600	284,444	161,185
Module Resolution	320x180	240x135	192x108	160x90	120x68
Cabinet Resolution	640x360	480x270	384x216	320x180	240x136
Mask	No	No	No	No	No
Lamp Type	SMD 3in1 0606	SMD 3in1 1010	SMD 3in1 1212	SMD 3in1 1515	SMD 3in1 2121
Module Size (mm)	300x168.75				
Cabinet Size (mm)	600x337.5x57				
Cabinet Weight (kg)	6.5±0.1				
Brightness (cd/sqm)	≥600				
Gray Scale (Bit)	14				
Color Temp (k)	3000~15000				
Perspective (horiz; Vert) °	160 ; 145				
Uniformity Of brightness	≥97%				
Contrast	5000:01:00				
Control System	Synchronous Control				
Protection Level	Front IP31, Rear IP43				
Intelligent Storage	AI Intelligent Storage				
Frame Frequency (Hz)	50/60FPS-120FPS				
Refresh Rate (Hz)	≥3840				
Working Voltage	AC:100~240V(50-60Hz)				
Power Consumption (W/ m²)	Max:≤600 Ave:≤200	Max:≤600 Ave:≤200	Max:≤600 Ave:≤200	Max:≤600 Ave:≤200	Max:≤600 Ave:≤200
Single Carton Consumption(W)	120				
Lifetime (hrs)	100,000				
Operating Temp (°C)	-10~+40				
Storage Temp (°C)	-20~+60				
Humidity Range(Rh)	10%~85%, Non-condensing				
Pixel Correction	Brightness And Color Correction				