

# LEDMAN LEDCOB

## Your First Choice for 4K LED Display

M Series - Indoor Fixed Series



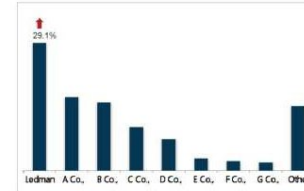
### Specifications

Model	M1.2	M1.5	M1.9
Pixel Pitch (mm)	1.26	1.58	1.9
Panel Size (mm)	304×342×57.5 608×342×72	304×342×57.5 608×342×72	304×342×57.5 608×342×72
Pixel (dot)	240×270 480×270	192×216 384×216	160×180 320×180
Material	Die casting Aluminum		
Weight (kg)	4.1 7.2	4.1 7.2	4.1 7.2
Brightness (nit)	600	600	600
Gray scale (bit)	13	13	13
Refresh rate (Hz)	3000	3000	3000
Power Max./Avg. (W/㎡)	450/150	450/150	450/150
Installation/Maintenance	Front		
Certification	CE ETL FCC		

Note: Power consumption plus or minus 10% depending on the different batch of LED chips. Ledman Optoelectronic Co., Ltd. reserves the right to modify specifications and parameters without further notice.

[www.ledman.com/sales@ledman.com](http://www.ledman.com/sales@ledman.com)

### >> Market Share No.1



According to the third-party authority: LEDMAN LEDCOB products market share ranked **TOP 1** in 2021.

### >> Independent R & D and manufacturing.

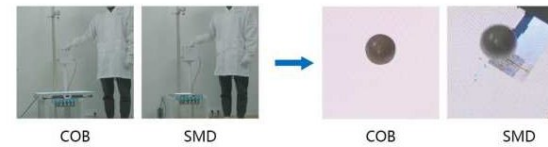


COB Workshop



53 COB Patents

### >> Anti-collision & Easy Cleaning.



COB SMD COB SMD

Collision Test >10 KG



Easy to clean with water

### >> Extremely Low Pixel Failure Rate.



LEDMAN COB (< 10PPM)



SMD LED Display (> 50PPM)

### >> Can be Splice Right Angle Screen & Energy Saving.



Small Cabinet



Right Angle

[www.ledman.com/sales@ledman.com](http://www.ledman.com/sales@ledman.com)