



MG SERIES FRONT ACCESS FINE PITCH LED DISPLAY

MG SERIES MG009 / MG012 / MG015 / MG018 / MG025



THE MOST COST-EFFECTIVE FINE PITCH SOLUTION

MG series is the most cost-effective fine pitch solution with the full front access functionality and identical form factor of Leyard TWS series. By utilizing Leyard's many years experience of fine pitch and adopting the minimalism concept, MG series achieves the high quality visual performance at a relatively low cost. The appearance of the MG series is carefully designed. The key components are well integrated into the compact shape while the heat dissipation is guaranteed. A function diagnostic button and status indicators could also be found on the panel. MG series has the realize signal loop backup feature in default, and power backup is optional.

KEY FEATURES



HDR Ready



16:9 Aspect Ratio



Generic Cables



Status Diagnostic



Full Front Access



Floating Connector



Quick Installation



6-axis Alignment



Easy Maintenance



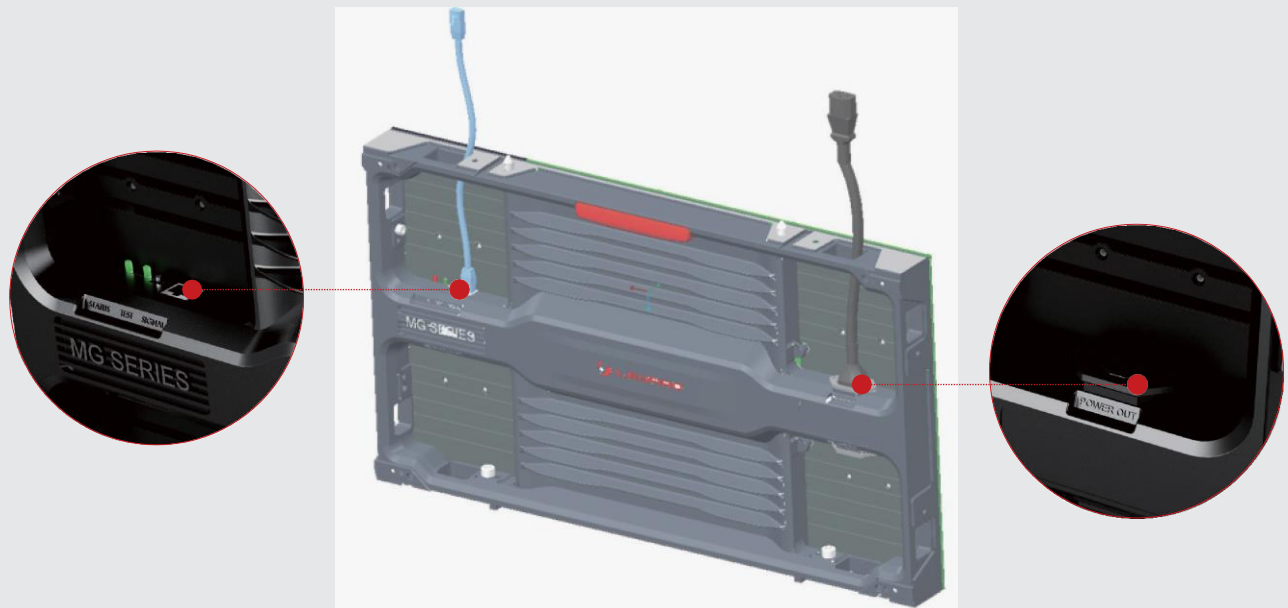
GOB LED Optional

TECHNOLOGY ADVANTAGES



Generic Cables

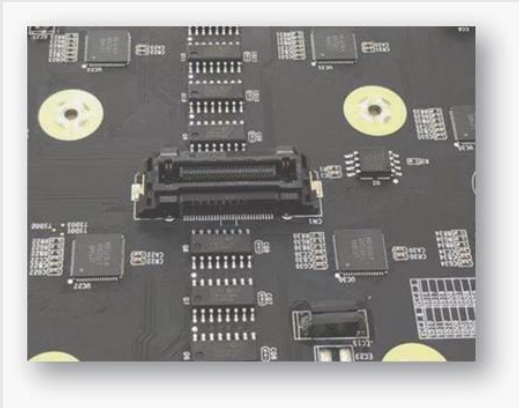
- > Concise appearance, off the shelf power and signal, ensuring the stable and reliable quality at a very low cost;
- > Cables between cabinets are connected inside, without adding up extra space.
- > Signal redundancy



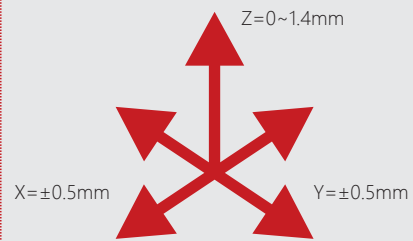


Floating Connector

- > Allowed position tolerance;
- > Resistant to torsion and shock;
- > Reduces stress on solder feet during fitting.

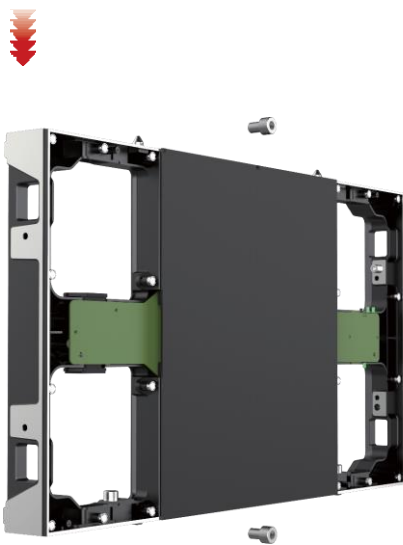


Chimeric Correction



Front / Rear Installation

- > Completely front disassembly;
- > Only need to remove two LED modules for easy maintenance.
- > Easier rear installation.

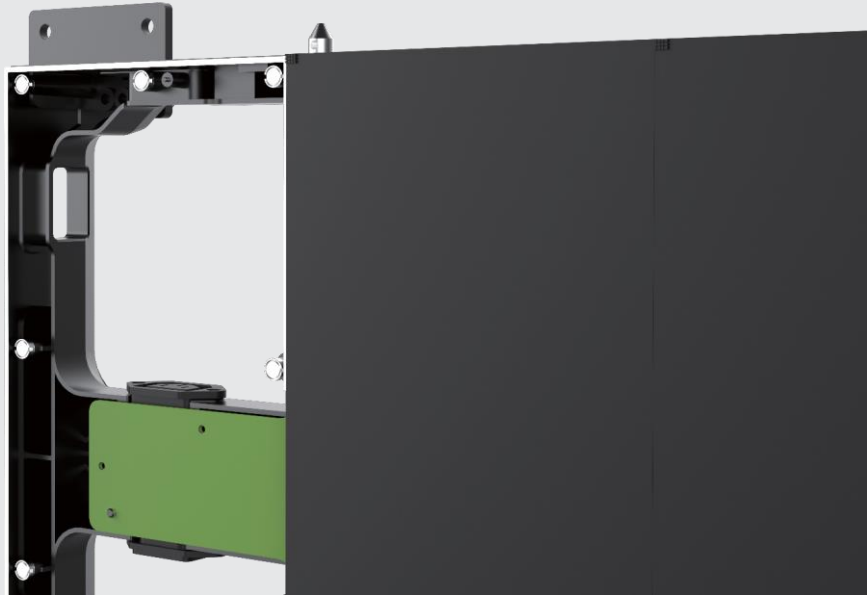


XYZ

6-axis Alignment

- > Module can be easily adjusted in Z-direction, and flatness can be optimized again.
- > A uniform tool can be used for X/Y/Z 6-axis adjustment between cabinets.

Z-direction



High Dynamic Range(Optional)

HDR

Support HDR function to meet more display requirements.



HDR



SDR



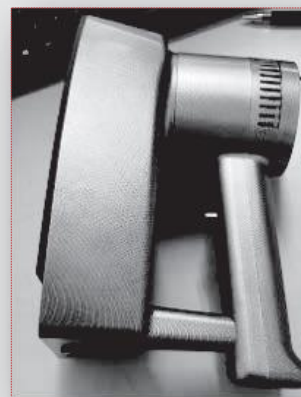
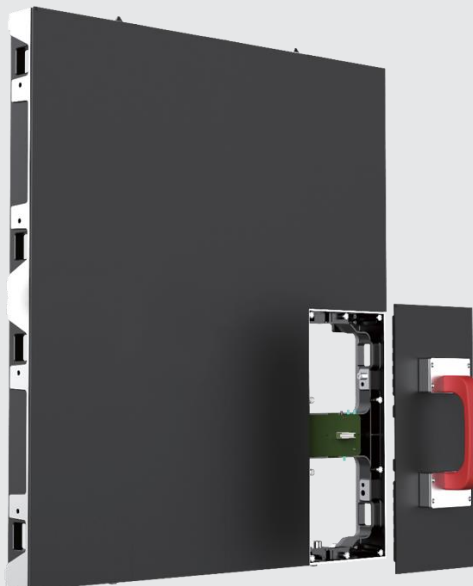
Status Diagnostic

Status indicators and button are in the main frame of the cabinet structure, and can be accessed from both front and back.



Aluminum Alloy Cabinet

- > Aluminum alloy cabinet with high rigidity and high splicing accuracy;
- > Magnetic and vacuum tools are optional for maintenance.



APPLICATIONS



SPECIFICATION

Item	MGO09	MGO12	MGO15	MGO18	MGO25
LED Configuration	SMD RGB 3 in 1	SMD RGB 3 in 1	SMD RGB 3 in 1	SMD RGB 3 in 1	SMD RGB 3 in 1
Pixel Pitch (mm)	0.9375	1.25	1.5625	1.875	2.5
Module Resolution (WxH)	160x360	120×270	96x216	80x180	60x135
Module Dimension (WxH, mm)	150x337.5	150x337.5	150x337.5	150x337.5	150x337.5
Module Composition (WxH)	4x1	4x1	4x1	4x1	4x1
Cabinet Resolution (WxH)	640x360	480x270	384x216	320x180	240x135
Cabinet Dimension (WxHxD, mm)	600x337.5x53				
Cabinet Area (m ²)	0.2025	0.2025	0.2025	0.2025	0.2025
Weight (kg/cabinet; kg/m ²)	6; 30	6; 30	6; 30	6; 30	6; 30
Pixel Density (Point/m ²)	1137777	640000	409600	284444	160000
IP Level	IP30	IP30	IP30	IP30	IP30
Brightness (nits)	600	600	600	600	600
Gray Scale Processing	16 Bits				
Color Temperature (K)	3000~10000				
Viewing Angle (H/V) °	160/140	160/140	160/140	160/140	160/140
Deviation of LED luminance Center	<3%	<3%	<3%	<3%	<3%
Brightness Uniformity	≥98%	≥98%	≥98%	≥98%	≥98%
Contrast Ratio	5000:1	5000:1	5000:1	5000:1	5000:1
Power Consumption (max; avg)/m ²	600W; 200W	600W; 200W	600W; 200W	600W; 200W	600W; 200W
Chromaticity Uniformity (after correction)	±0.003Cx, Cy within				
Input Voltage (V)	AC100~240V (50-60Hz)				
Installation	Front / Rear				
Refresh Rate @60Hz	≥3840	≥3840	≥3840	≥3840	≥3840
Frame rate Processing (Hz)	50&60	50&60	50&60	50&60	50&60
Operating Temperature (°C)	-20—40	-20—40	-20—40	-20—40	-20—40
Storage Temperature (°C)	-30—60	-30—60	-30—60	-30—60	-30—60
Operating Humidity (RH)	10~90% no condensation				
Storage Humidity (RH)	10~80% no condensation				
Lifetime	100.000 hours: 24/7				

Remark: Above data is subject to change without prior notice



LEYARD
STOCK CODE: 300296

SHENZHEN LEYARD OPTO-ELECTRONIC CO., LTD

ADD: Block 2/3/4, Jia'AnDa Industrial Park, Dalang, Longhua, Shenzhen, 518109, China.

Tel: +86-755-2819-7999 / Fax: +86-755-29671239

Email: intlmarketing@leyard.com / Website: sz.leyard.com