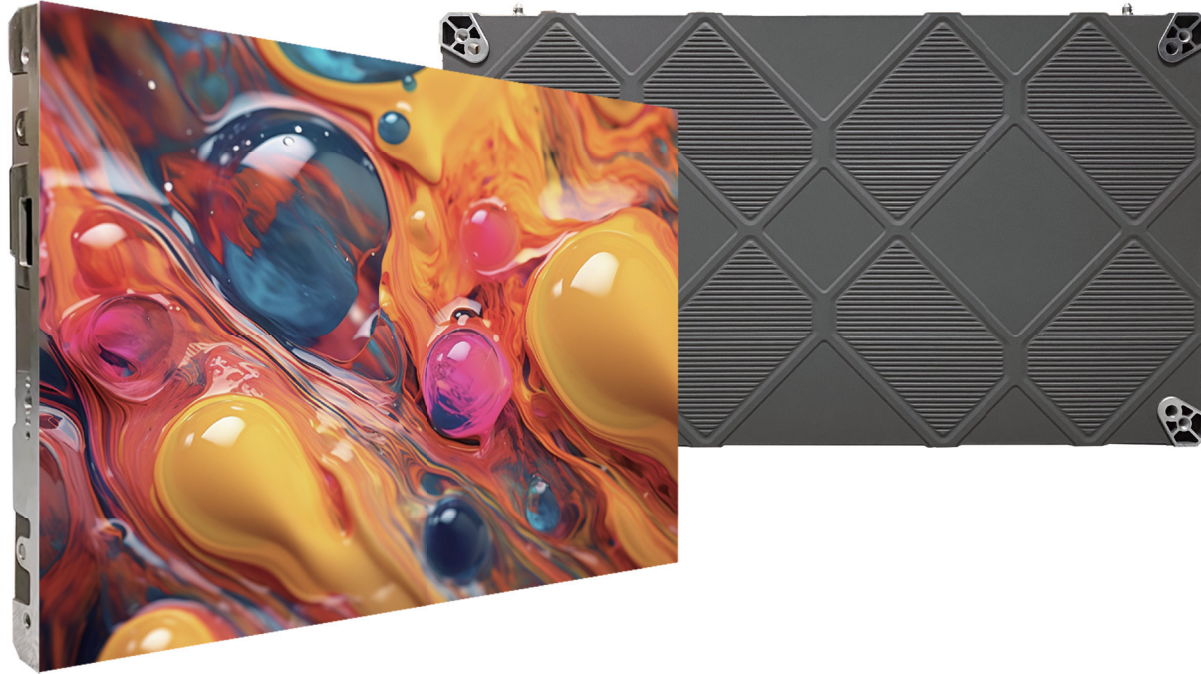


LEDMAN LEDCOB

Your First Choice for 4K LED Display

Indoor Fixed Panel

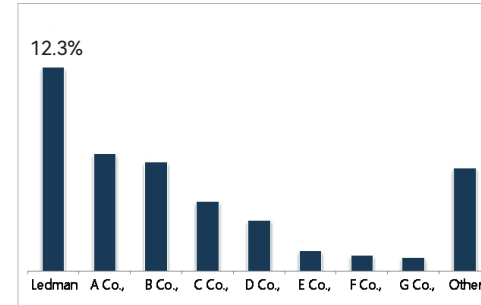


Specifications

Model	QF0.7	QF1.2	QF1.5
Pixel Pitch (mm)	0.78	1.25	1.56
Panel Size (mm)	600×337.5×37	600×337.5×37	600×337.5×37
Pixel (dot)	768×432	480×270	384×216
LED Type	COB 1R1G1B (Flip Chip)	COB 1R1G1B (Flip Chip)	COB 1R1G1B (Flip Chip)
Material	Die casting Aluminum	Die casting Aluminum	Die casting Aluminum
Weight (kg)	4.6	4.5	4.5
Brightness (nit)	600	600	600
Gray scale (bit)	16	13	13
Refresh rate (Hz)	3840	3840	3840
Power Max. (W/ m ²)	320	260	300
Installation/Maintenance	Front	Front	Front
Certification	CE ETL FCC		

Note: Power consumption plus or minus 15% depending on the different batch of LED chips.
 Ledman Optoelectronic Co., Ltd. reserves the right to modify specifications and parameters without further notice.
 Ledman Optoelectronic Co., Ltd. reserves the final interpretation right of this document.

>> Market Share No.1



According to the third-party authority:
 LEDMAN LEDCOB products market share ranked **TOP 1** in 2023.

>> Independent R & D and manufacturing

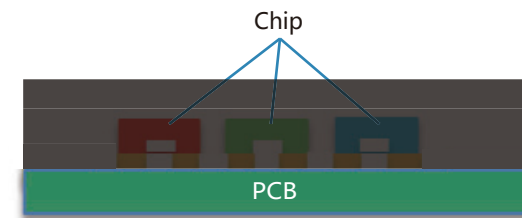


COB Workshop



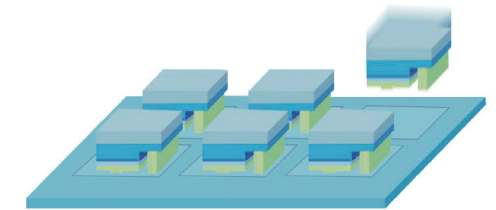
53 COB Patents

>> Flip Chip.



• No wire bonding

• High Contrast Ratio



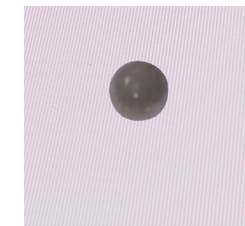
• Blacker - Better Display Effect

>> High Protection.

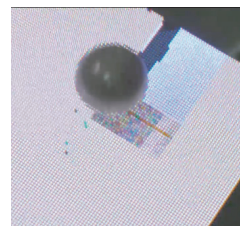


Ledman COB LED Display

SMD LED Display



Ledman COB LED Display

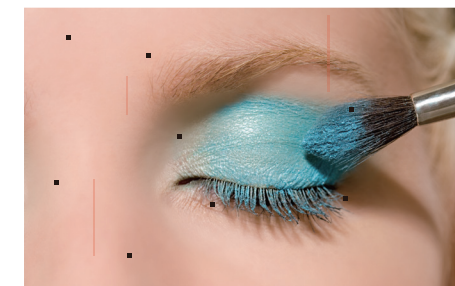


SMD LED Display

>> Extremely Low Rate of Pixel Out of Control.



Micro LED (< 10PPM)



SMD LED Display (> 50PPM)